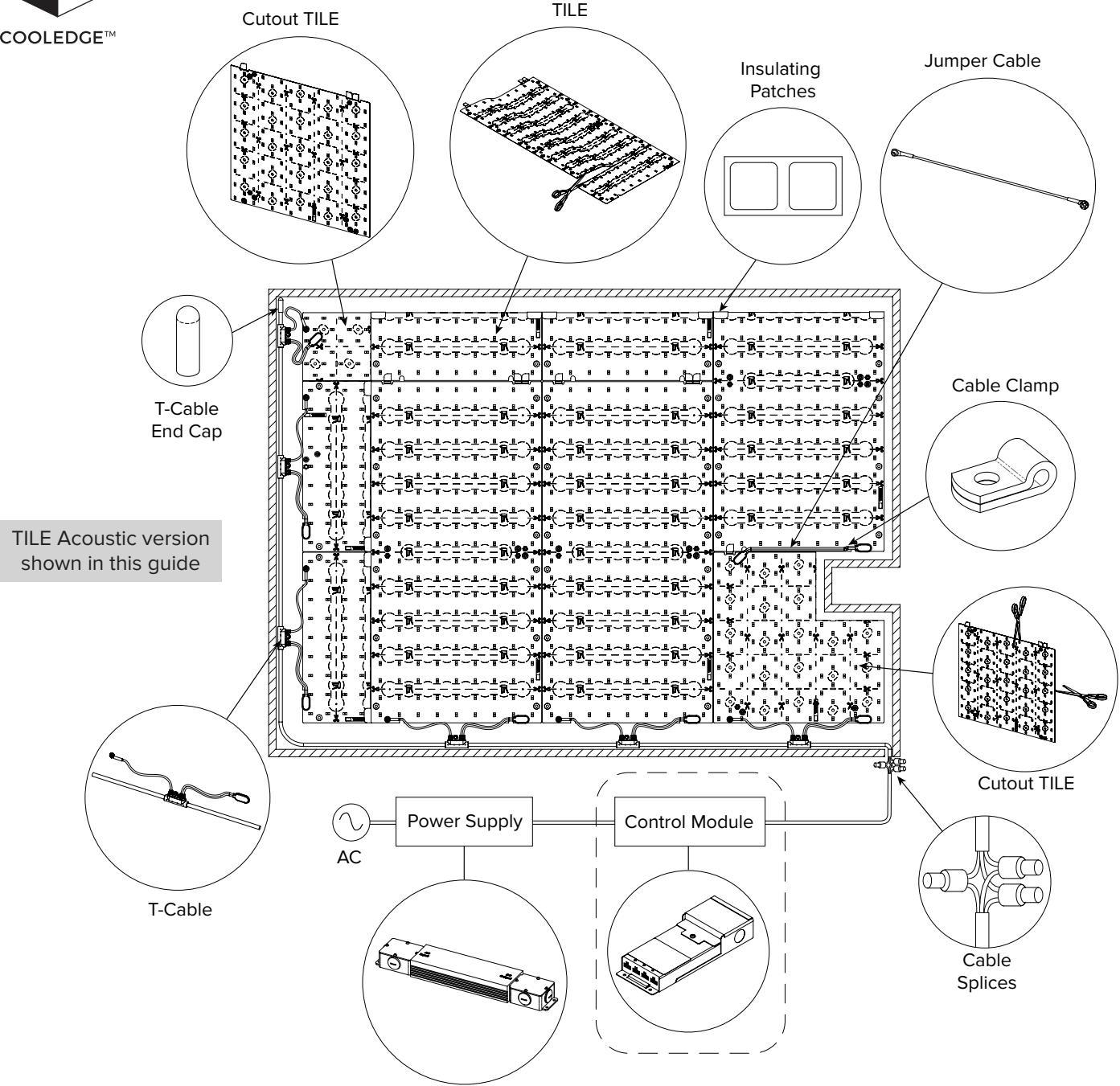




# COOLEEDGE TILE TUNABLE WHITE R3 QUICK START GUIDE



For detailed instructions, please refer to:  
 - EXT-0106-R02 TILE Tunable White R3 Installation Manual  
 - Cooleedge Power & Control User Guide (for the appropriate control protocol)

This guide covers the following products:  
 - TILE Tunable White (TNW & DTW)  
 - TILE Acoustic (TNW & DTW)

Caution: Observe precautions for handling electrostatically sensitive devices.



## RoHS



5 Year Limited Warranty:  
 Parts and workmanship

Cooleedge Lighting Inc.  
 110-13551 Commerce Parkway  
 Richmond, BC V6V 2L1 Canada

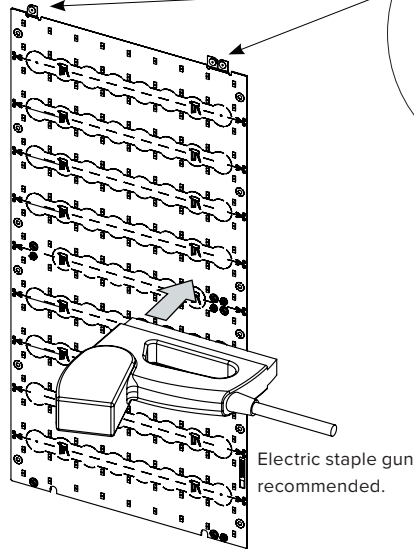
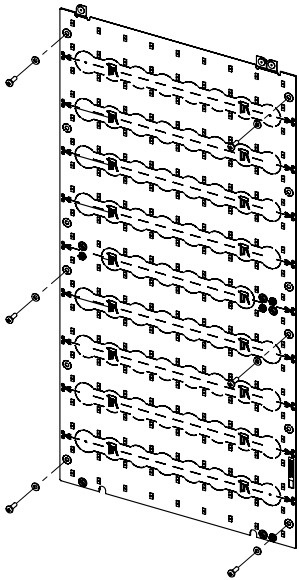
O +1604 273 2665  
 F +1604 273 2660  
 T +1844 455 4448  
 W cooleedgeighting.com

Cooleedge Lighting reserves the right to change materials or modify the design of its product without notification as part of the company's continuing product improvement program.

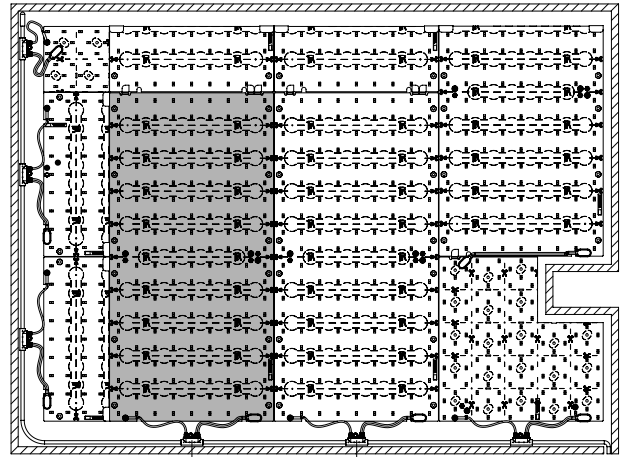
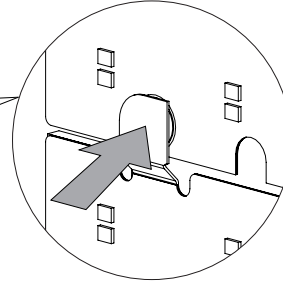
## INSTALL TILE

NOTE: Mounting surface must be non-conductive (eg. drywall, plywood, etc)

Snap together to connect light sheets



Electric staple gun recommended.



11.8"  
300 mm

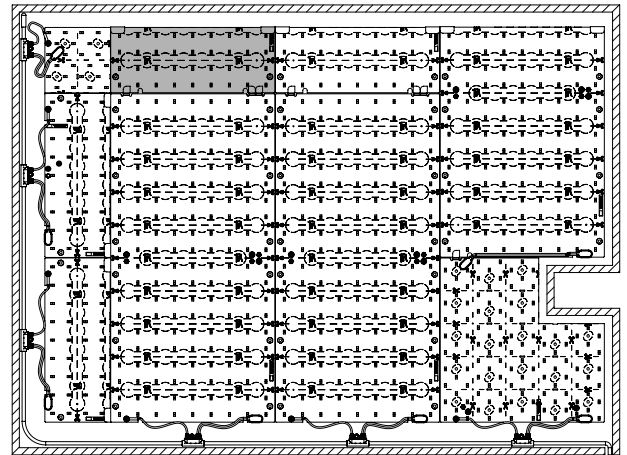
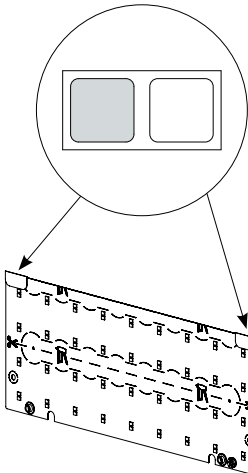
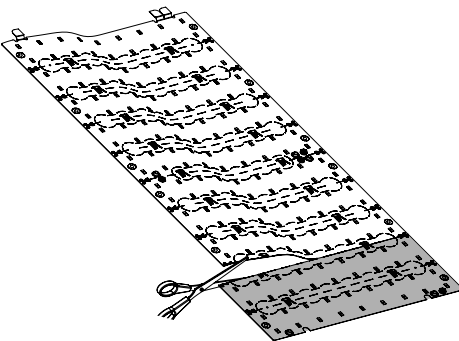
Install with screws and plastic washers (M4 or #8 screw)

or

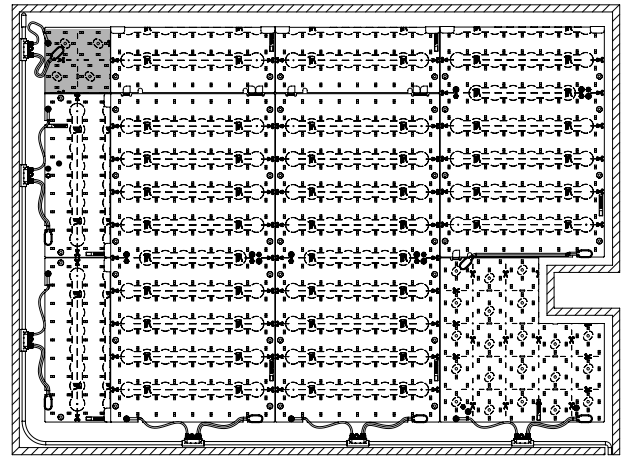
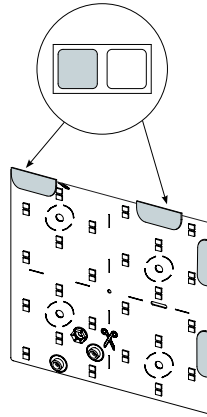
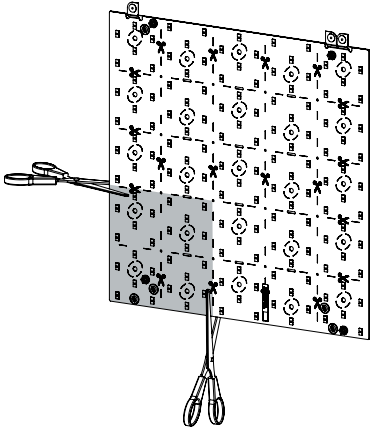
Staple inside circles (Max recommended staple size = 1/2" or 12mm)

## 2 CUT TILES

Install insulation patches at each corner of the cut edge



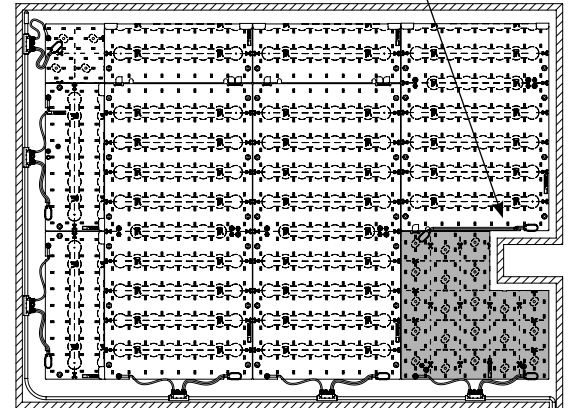
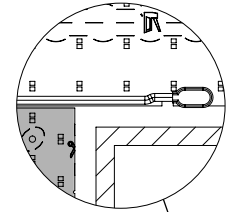
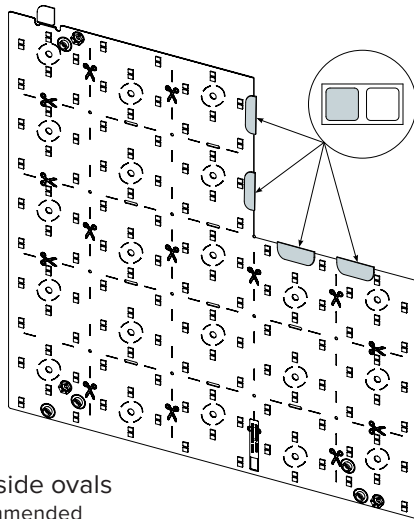
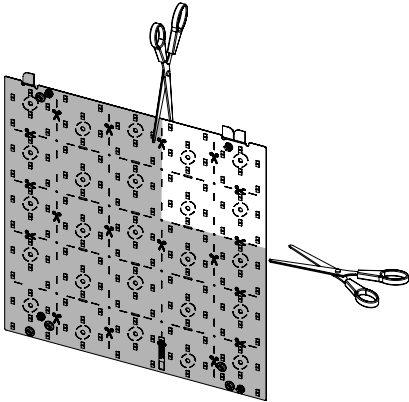
3 INSTALL CUT-OUT TILE IN CORNER



Install with screws and plastic washers (M4 or #8 screw)

or Staple inside ovals (Max recommended staple size = 1/2" or 12mm)

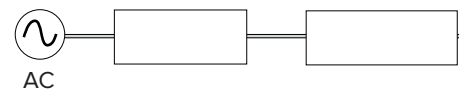
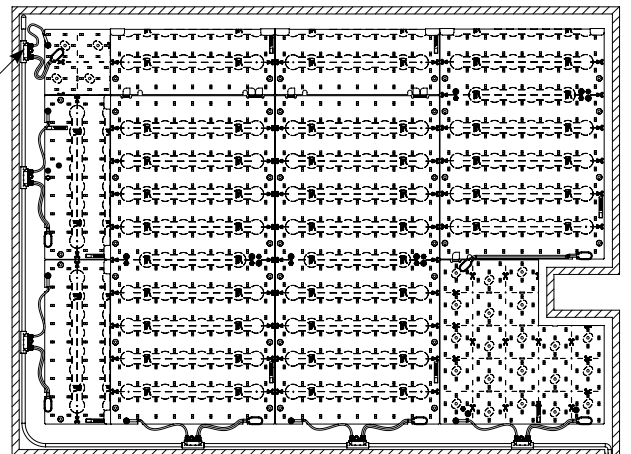
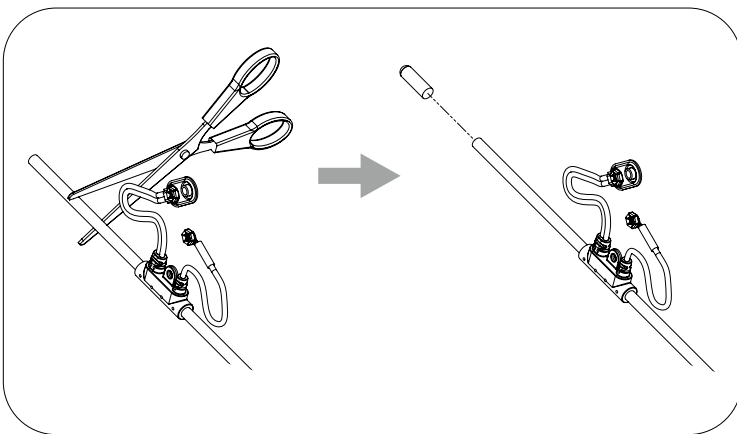
4 INSTALL CUT-OUT TILE(S)



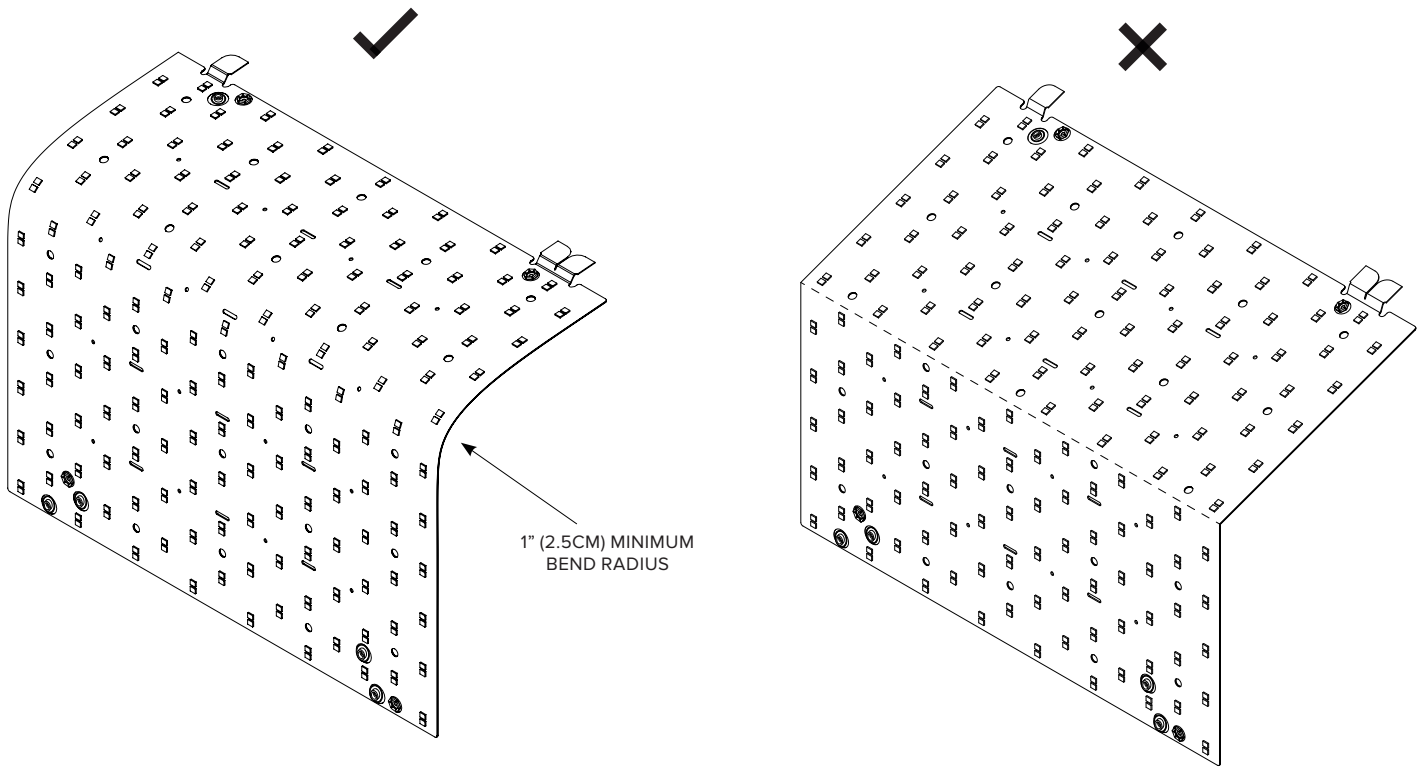
Install with screws and plastic washers (M4 or #8 screw)

or Staple inside ovals (Max recommended staple size = 1/2" or 12mm)

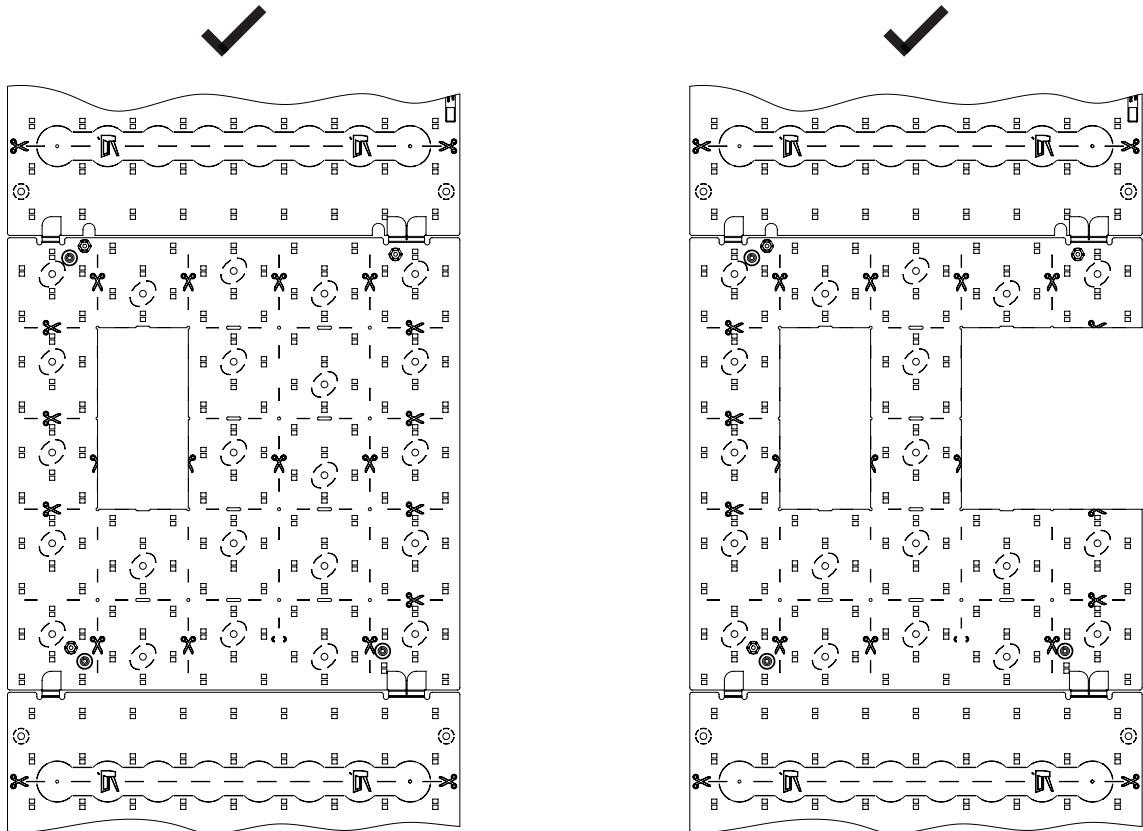
5 INSTALL T-CABLE AND CUT TO SIZE



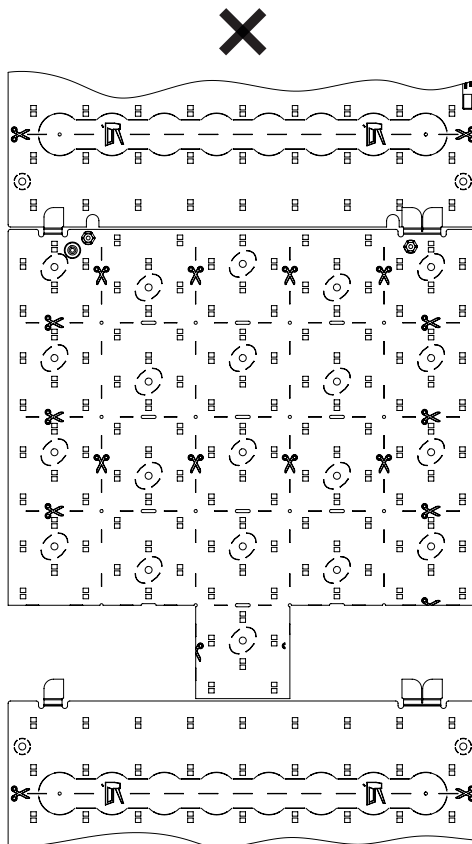
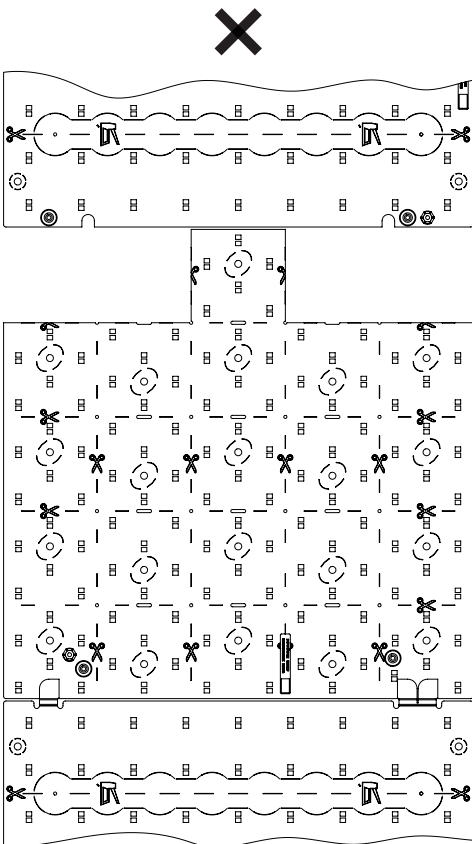
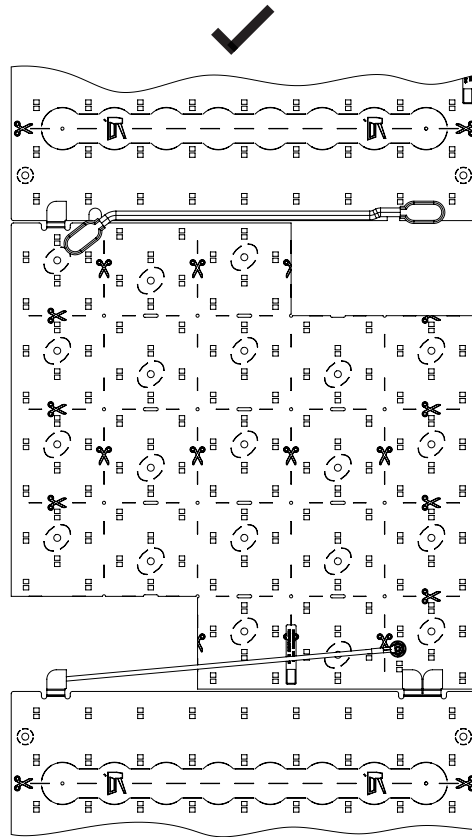
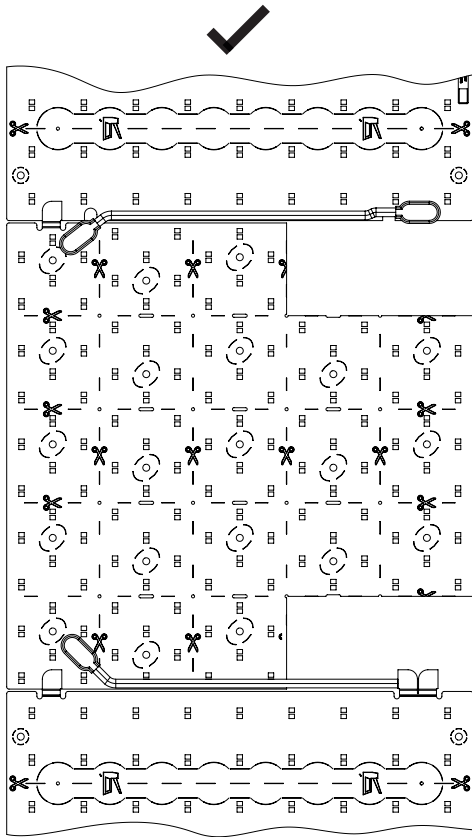
DO NOT BEND SHEETS SHARPLY AROUND CORNERS



CUT-OUT TILE- ACCEPTABLE INTERNAL CUT-OUT CONFIGURATIONS (EXAMPLES)

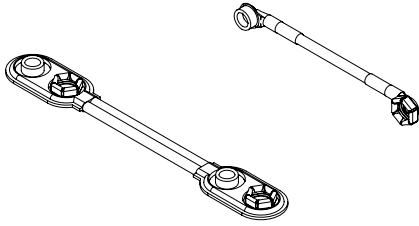


CUT-OUT TILE - ACCEPTABLE CORNER CUT-OUT CONFIGURATIONS (EXAMPLES)

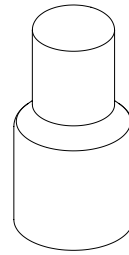


STARTER KIT CONTENTS

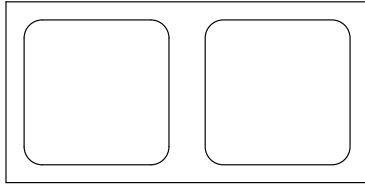
Cut Tile Reuse Jumper Cable



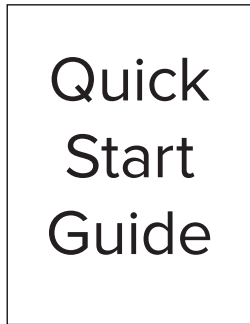
Splice Connector (6)



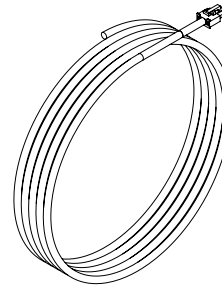
Insulating Patches (12)



T-Cable End Cap (4)

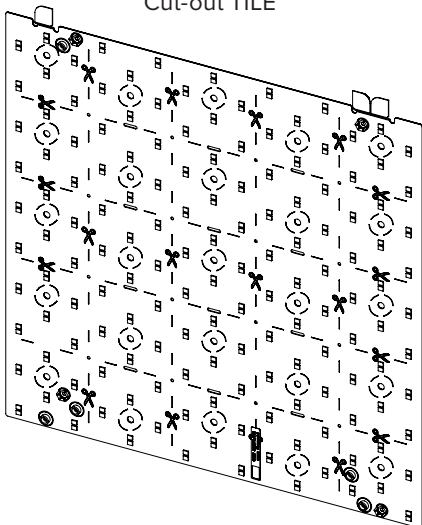


16 AWG (1.3mm<sup>2</sup>) Cable, 10ft (3m) Length

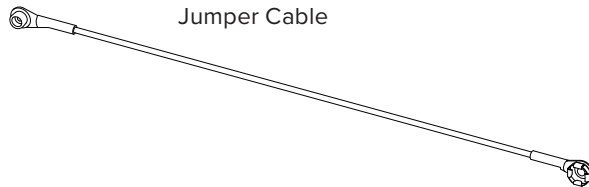


CUT-OUT KIT CONTENTS

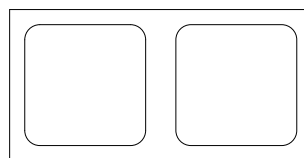
Cut-out TILE



Jumper Cable



Insulating Patches (4)



Cable Clamp (2)

